

# Anatomy

## *FEMALE REPRODUCTIVE SYSTEM*

By: *DR. AMMAR ISMAIL*

# Shape of ovaries:

no	cow	Horse	Dog
1	Oval	Bean	elongated oval 2 cm
2	4cm	7-8	2cm
3	Has no ovulation fossa	Covered partly with ovulation fossa	Coverd completely with ovulation fosia
4	Located in pelvic cavity	Under 4.5 lumber vertebrae	Under 2.3 lumber vertebra in the cortex
5	Follicle in the cortex	In the interior of ovary covered partially	Coverd completely
6	Has no ovulation bursa	Ovarian bursa	With ovarian bursa

# Uterine tube : oviduct

## Fallopian tube

They turn to is narrow muscular tube which convey oocyte (ovum) from the ovary to the uterus the second maturation division of oocyte take place in the uterine tube

The fertilize ovum take several days to reach the uterus horn

Pig ,sheep .cat 3days cow 3-5 days, horse 8 days

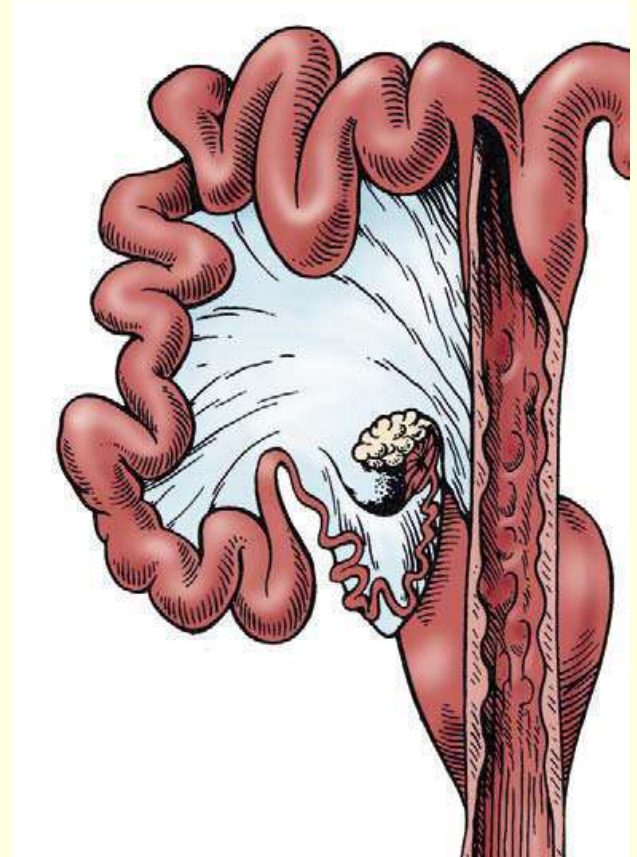
The ovarian end of the uterine tube is form by funnel shaped infundibulum. Near the centre of which it is small abdominal opining is called ostium abdominal of the tube.

This opening lead into relatively wide segment of part ampulla of uterine tube

The remanded of tube isthmus:-is narrow and just wide enough fore the ovum to pass through .

it end at the uterine horn with uterine opening which is in dog &horse is only a small papillae .

The free margin of the infundibulum . is indented to form a regular process fimbriae . they uterine is in closed in peritoneum fold (meso salpinx )



# Uterus

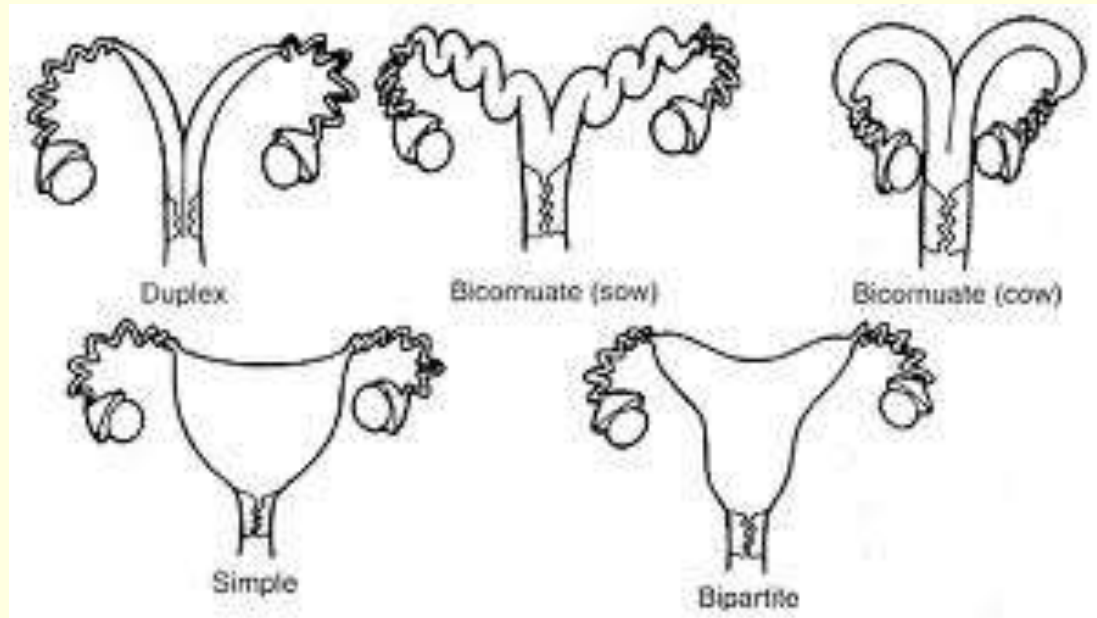
1. cervix 2. Body 3.  
Two horns

Type of uterus

Uterus duplex : Rabbit

Uterus bicornis subseptus :  
ruminant, pig

Uterus simplex : women



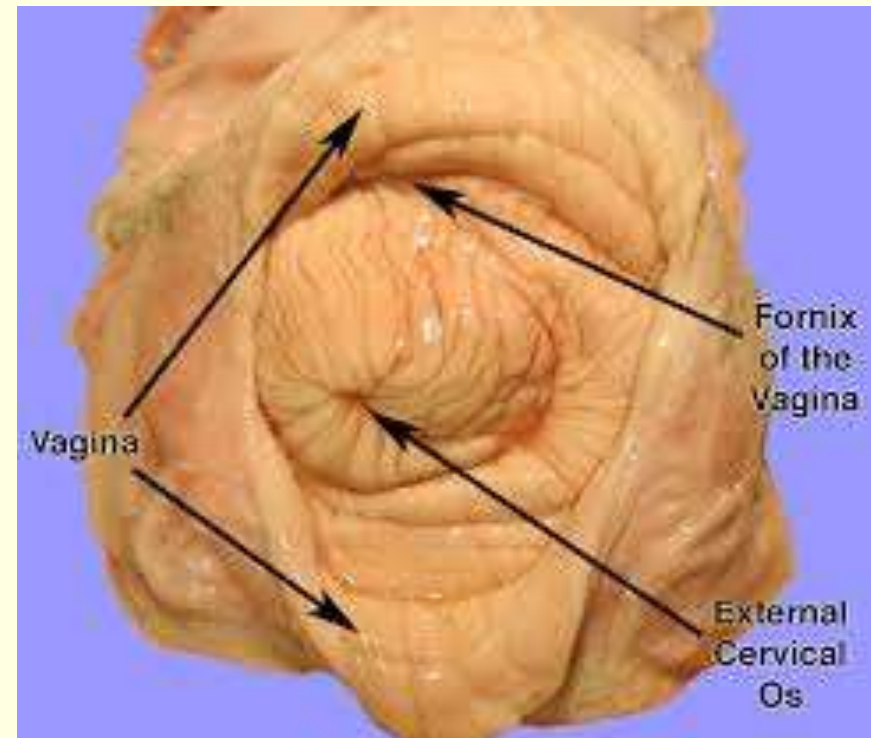
# Uterus :

---

- body of the uterus is long in the mare 20cm
- short in cow (1-2) cm .
- In the bitch about (1-3) cm it is a simple muscular tube between the horn and the cervix
- **The horns** : of the uterus in the mare is cylindrical about 25cm long and located in abdominal cavity .
- The cranial end form a blunt point .Which reserve the uterine tube in the ruminant the horn is long (35-40) cm and spiral or coil, they taper gradually so that the junction with uterine tube is not a abrupt as in mare
- The mucus membrane present uterine caruncles
- Caruncle :- there are oval prominent about (100) in number
- uterus located in the pelvic cavity .
- In the bitch the horn is very long it reach near the kidney . caudally the horns united in v shape
- In the saw : the horn is very long is about (1-12)meter

Cervix : of the uterus is constructed caudal part which join the vagina. It is about 5 cm in mare, part of it project in the vagina. Has a straight canal with longitudinal fold

Cow :-cervix about 10cm and has longitudinal and transverse fold . the cervical canal is spiral (coil) bitch is short .



## Vagina :

is copulatory organ of the female .

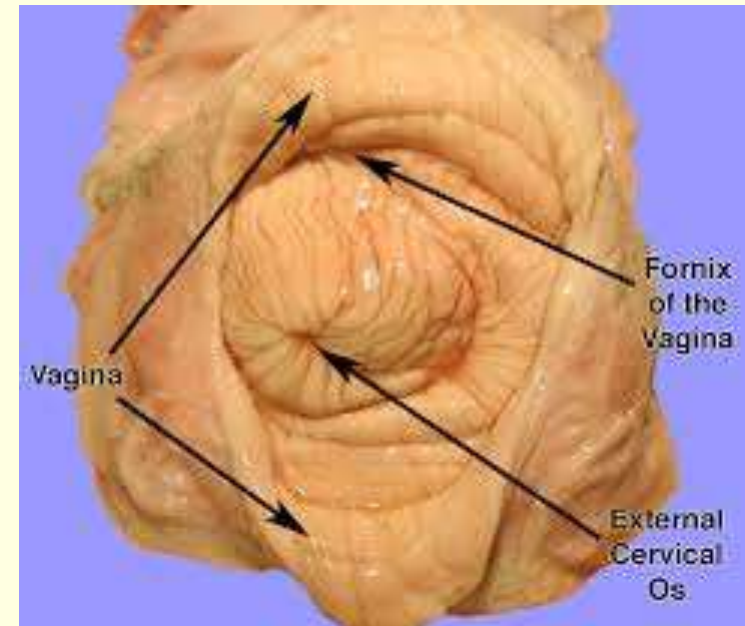
It is thin wall tube extend longitudinally inside the pelvic cavity to the urinary bladder and urethra

the cranial part of the vagina is occupied by the vaginal part of the cervix around which is the vaginal lumen . form an annular recess. Called formic of vagina

vaginal wall consist of smooth muscles which is line with non glandular mucous membrane

the junction between vaginal and vestibule at the level of external urethra or face

in the floor of the genital tract and this junction is marked by transverse fold the hymen .



## vestibule of vagina

---

vestibule belong urinary and genital system. extended from the external urethral orifice to the labia of the valve .

in the floor of the vestibule of the sow and cow is the entrance to the subutheral diverticulum, which is short blind pouch ventral to the urethral orifice the vestibule is lined with redish membrane cover with stratified squamous epithelium, containing mucous glands

the glands are

Minor vestiblar glands

Major vestiblar glands

And there is also body of erectile tissues called vestibular bulb

On the floor of the vestibule we can see of the vestibule glands



Animal	Major glands	Minor glands	Bulb vestibule
Hors	+	+	+
Ox cow	+	+	+
Sheep ewe	+	-)+	+
Goat doe	+	-	+
Dog bitch	+	-	+
Cat	+	+	-
Human	+	+	+

## External genitalia feminine pudendum (vulva)

The vulva is only external part of the female genital tract . consist of right and left labia in the ventral commissur between the labia is the vulva cleft which lead into the vestibule in

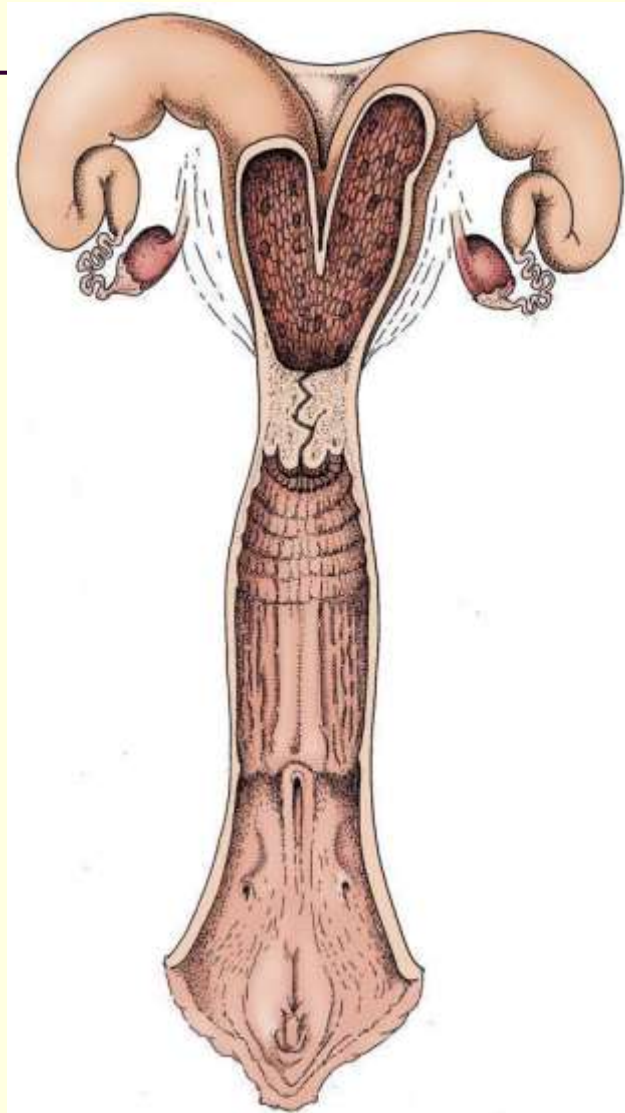
Mare :-the ventral commissur is rounded

Cow : is pointed

The labia are cover by thin pigmented smooth skin

Which supplied sebaceous & sweat

The skin cover with heir anter . the skin there is a layer of striated muscle construction vulva



# Clitories :-

---

- Homologue of penis consist of similar part- minus urithra & muscles
- In Mare :- consist of body which is about 5cm long and has two crura and glans which is rounded and occupied the fossa clitoris in the ventralis commissar on the valve
- The clitoris surrounded to the prepuce of the clitoris
- Clitoris composed of erectile tissue